



Yacht Club Master Plan Update

Committee of the Whole - 3/13/24

Site Plan

Approved by Council on 1/17/24

- KEY**
- 1 ENTRY DRIVE
 - 2 LAWN
 - 3 PLAYGROUND
 - 4 EXPANDED BEACH
 - 5 PROPOSED RESTAURANT (6,700 SF)
 - 6 RESORT STYLE POOL (14,500 SF)
 - 7 YACHT CLUB COMMUNITY CENTER
 - 8 THE BOATHOUSE RESTAURANT
 - 9 EXISTING BOAT FUEL PUMP
 - 10 CHILDREN'S POOL (3,700 SF)
 - 11 SURFACE PARKING (15 SPACES)
 - 12 PARKING DECK (500 +/- SPACES, 4 LEVELS)
 - 13 HARBOR MASTER BUILDING
 - 14 BOAT TRAILER PARKING (46 SPACES)
 - 15 BOAT RAMP
 - 16 STORMWATER
 - 17 PIER WITH SHADE STRUCTURE
 - 18 BOARDWALK
 - 19 FOUNTAIN / WATER FEATURE
 - 20 RESTROOM
 - 21 SERVICE ACCESS
 - 22 LANDSCAPE BERM
 - 23 DAY DOCKS (27 SLIPS)
 - 24 YACHT BASIN (121 SLIPS)
 - 25 (5) STAGING SLIPS
 - 26 PUMP OUT STATION
 - 27 EMERGENCY SERVICES BOAT DOCKS (5 SLIPS)



Building Square Footage

1st Floor – 20,000 sf

2nd Floor – 17,000 sf

Total – 37,000 sf

Original Community Center: Floor Plan

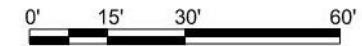


Revised Community Center: First Floor Plan



SPACE LEGEND

- EVENT SPACES
- MEETING SPACES
- CIRCULATION
- RESTROOMS
- SUPPORT SPACES
- MISCELLANEOUS



Building Square Footage

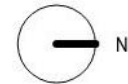
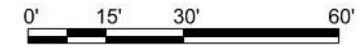
1 st Floor	– 27,250 sf
2 nd Floor	– 19,750 sf
Total	– 47,000 sf

Revised Community Center: Second Floor Plan



SPACE LEGEND

- EVENT SPACES
- MEETING SPACES
- CIRCULATION
- RESTROOMS
- SUPPORT SPACES
- MISCELLANEOUS

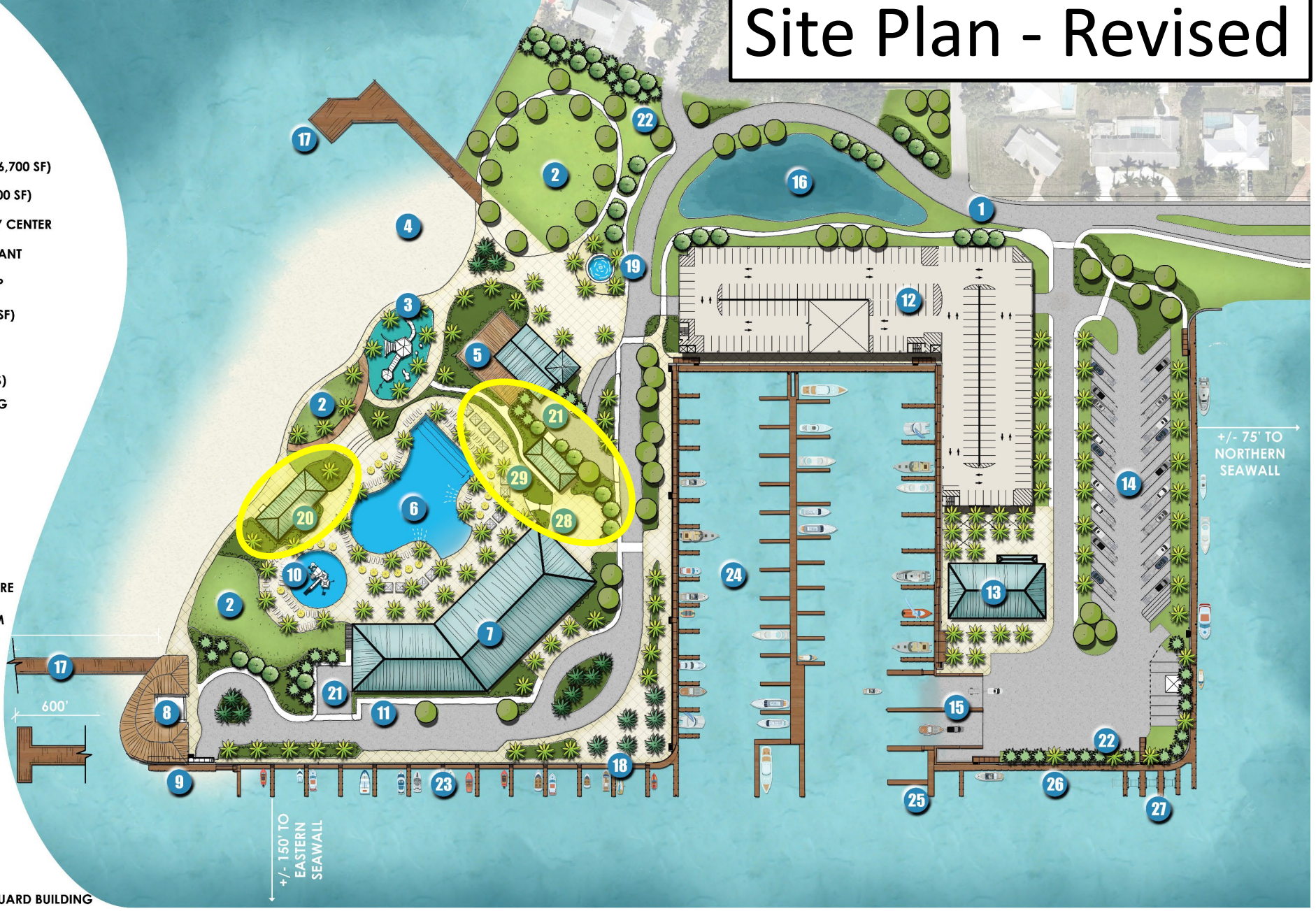


Building Square Footage

1 st Floor	– 27,250 sf
2 nd Floor	– 19,750 sf
Total	– 47,000 sf

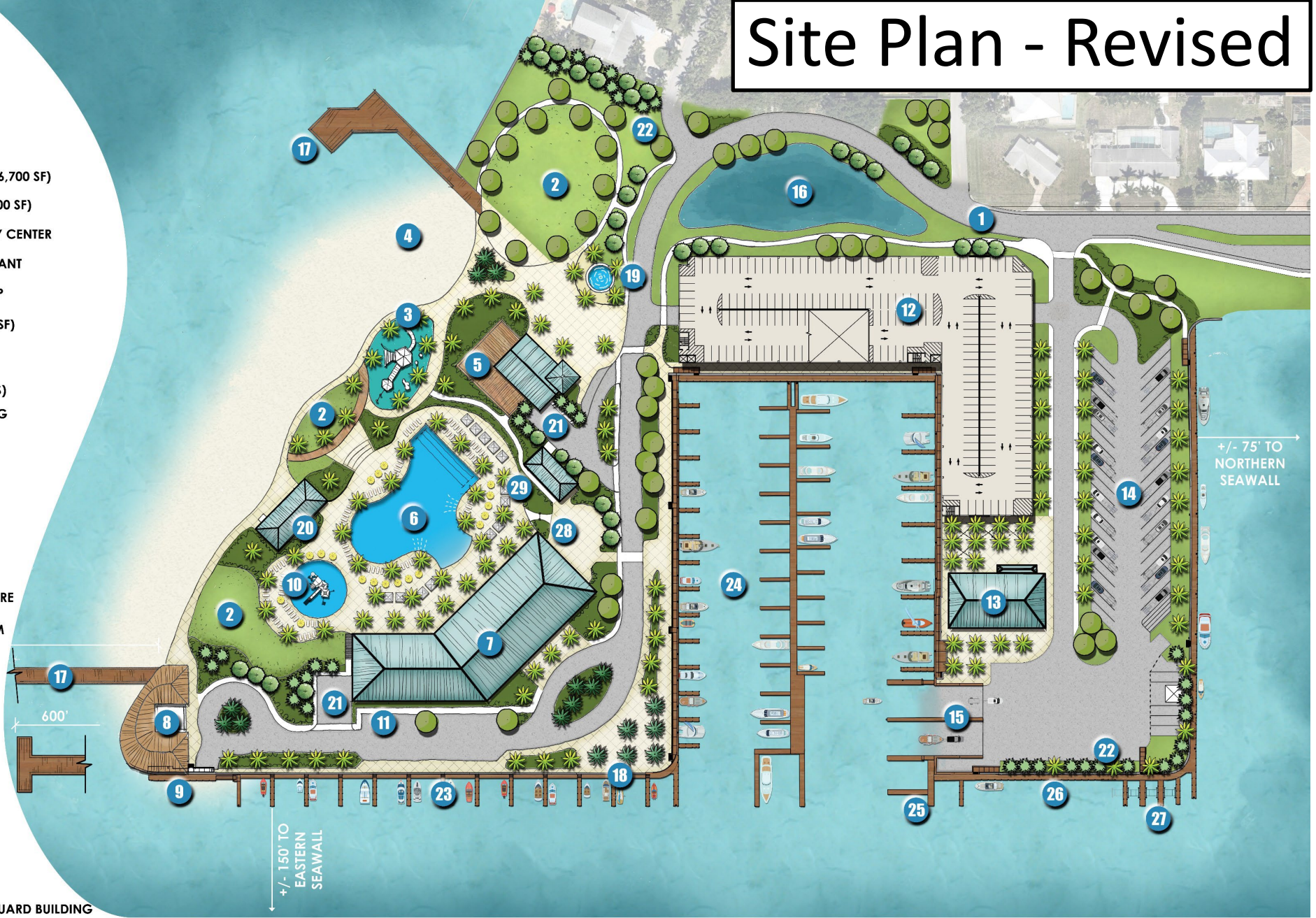
Site Plan - Revised

- KEY**
- 1 ENTRY DRIVE
 - 2 LAWN
 - 3 PLAYGROUND
 - 4 EXPANDED BEACH
 - 5 PROPOSED RESTAURANT (6,700 SF)
 - 6 RESORT STYLE POOL (14,500 SF)
 - 7 YACHT CLUB COMMUNITY CENTER
 - 8 THE BOATHOUSE RESTAURANT
 - 9 EXISTING BOAT FUEL PUMP
 - 10 CHILDREN'S POOL (3,700 SF)
 - 11 SURFACE PARKING (15 SPACES)
 - 12 PARKING DECK (500 +/- SPACES, 4 LEVELS)
 - 13 HARBOR MASTER BUILDING
 - 14 BOAT TRAILER PARKING (46 SPACES)
 - 15 BOAT RAMP
 - 16 STORMWATER
 - 17 PIER WITH SHADE STRUCTURE
 - 18 BOARDWALK
 - 19 FOUNTAIN / WATER FEATURE
 - 20 BEACH / POOL RESTROOM
 - 21 SERVICE ACCESS
 - 22 LANDSCAPE BERM
 - 23 DAY DOCKS (27 SLIPS)
 - 24 YACHT BASIN (121 SLIPS)
 - 25 (5) STAGING SLIPS
 - 26 PUMP OUT STATION
 - 27 EMERGENCY SERVICES BOAT DOCKS (5 SLIPS)
 - 28 POOL ENTRY STATION
 - 29 POOL EQUIPMENT / LIFEGUARD BUILDING



Site Plan - Revised

- KEY**
- 1 ENTRY DRIVE
 - 2 LAWN
 - 3 PLAYGROUND
 - 4 EXPANDED BEACH
 - 5 PROPOSED RESTAURANT (6,700 SF)
 - 6 RESORT STYLE POOL (14,500 SF)
 - 7 YACHT CLUB COMMUNITY CENTER
 - 8 THE BOATHOUSE RESTAURANT
 - 9 EXISTING BOAT FUEL PUMP
 - 10 CHILDREN'S POOL (3,700 SF)
 - 11 SURFACE PARKING (15 SPACES)
 - 12 PARKING DECK (500 +/- SPACES, 4 LEVELS)
 - 13 HARBOR MASTER BUILDING
 - 14 BOAT TRAILER PARKING (46 SPACES)
 - 15 BOAT RAMP
 - 16 STORMWATER
 - 17 PIER WITH SHADE STRUCTURE
 - 18 BOARDWALK
 - 19 FOUNTAIN / WATER FEATURE
 - 20 BEACH / POOL RESTROOM
 - 21 SERVICE ACCESS
 - 22 LANDSCAPE BERM
 - 23 DAY DOCKS (27 SLIPS)
 - 24 YACHT BASIN (121 SLIPS)
 - 25 (5) STAGING SLIPS
 - 26 PUMP OUT STATION
 - 27 EMERGENCY SERVICES BOAT DOCKS (5 SLIPS)
 - 28 POOL ENTRY STATION
 - 29 POOL EQUIPMENT / LIFEGUARD BUILDING



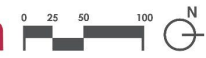
MASTER PLAN

MARCH 2024 • CONTACT: JAMES PANKONIN PLA (941)-379-7600

YACHT CLUB
CAPE CORAL, FLORIDA



Kimley»Horn





Design Option 1 - Inspiration Images



3/13/24 - Community Center Design Options
City of Cape Coral Yacht Club

SWEETSPARKMAN
ARCHITECTURE & INTERIORS

Kimley»Horn



Design Option 1



3/13/24 - Community Center Design Options
City of Cape Coral Yacht Club

SWEETSPARKMAN
ARCHITECTURE & INTERIORS

Kimley»Horn

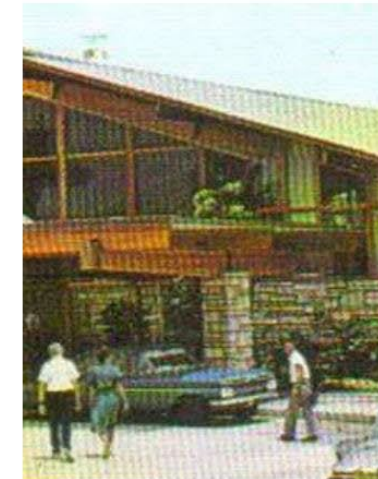


Design Option 1 - Precedent Images



3/13/24 - Community Center Design Options
City of Cape Coral Yacht Club





Design Option 2 - Inspiration Images



3/13/24 - Community Center Design Options
City of Cape Coral Yacht Club

SWEETSPARKMAN
ARCHITECTURE & INTERIORS
Kimley»Horn



Design Option 2



3/13/24 - Community Center Design Options
City of Cape Coral Yacht Club

SWEETSPARKMAN
ARCHITECTURE & INTERIORS
Kimley»Horn



Design Option 2 - Precedent Images



3/13/24 - Community Center Design Options
City of Cape Coral Yacht Club

SWEETSPARKMAN
ARCHITECTURE & INTERIORS
Kimley»Horn



Design Option 3 - Inspiration Images



3/13/24 - Community Center Design Options
City of Cape Coral Yacht Club





Design Option 3



3/13/24 - Community Center Design Options
City of Cape Coral Yacht Club

SWEETSPARKMAN
ARCHITECTURE & INTERIORS

Kimley»Horn



Design Option 3 - Precedent Images



3/13/24 - Community Center Design Options
City of Cape Coral Yacht Club

SWEETSPARKMAN
ARCHITECTURE & INTERIORS
Kimley»Horn



Questions?

Kimley»»Horn